

KEY PLAN

Revisions

No.	Description	Date

REFLECTED CEILING PLAN LEGEND

- CEILING ELEVATION TARGET
- SUSPENDED CEILING TILE IN METAL T-GRID
- PAINTED GYPSUM BOARD CEILING
- EXPOSED METAL DECK
- 2X2 LAY-IN FLUORESCENT LIGHT FIXTURE
- RECESSED CAN LIGHT FIXTURE
- 4" INDUSTRIAL FLUORESCENT

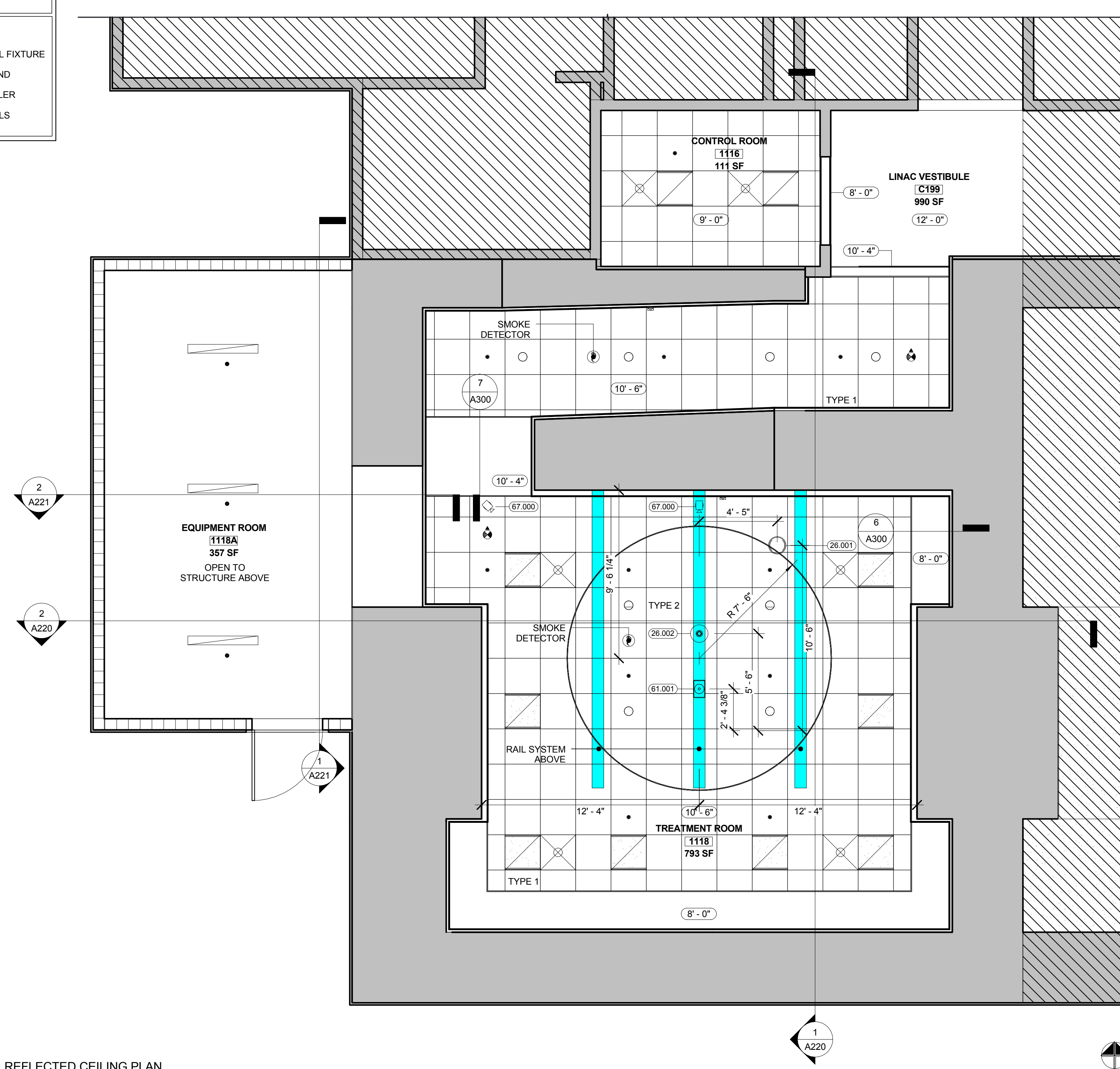
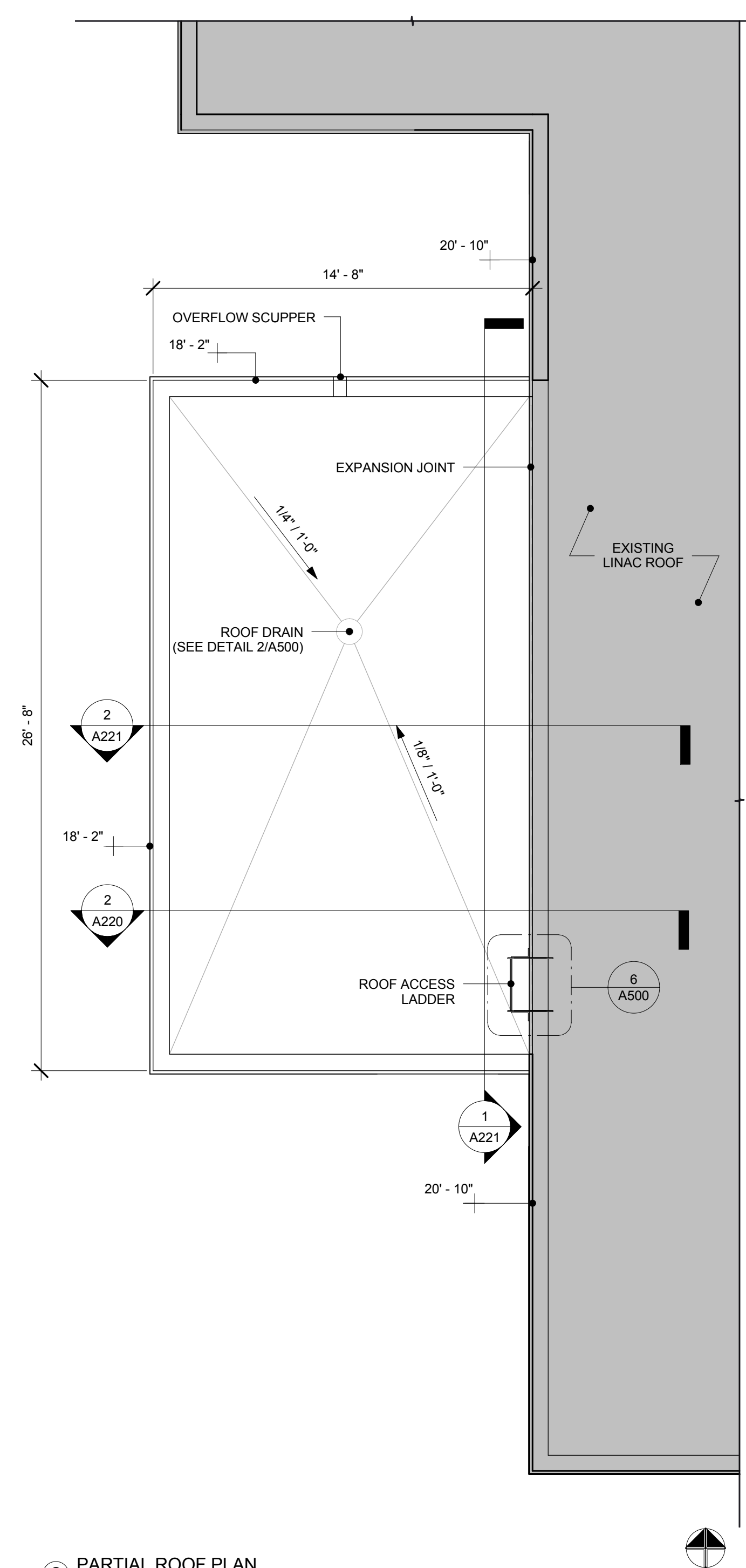
- GENERAL NOTES:**
- SEE ELECTRICAL DRAWINGS FOR ADDITIONAL FIXTURE INFORMATION.
 - SEE MECHANICAL DRAWINGS FOR SUPPLY AND DIFFUSER INFORMATION.
 - SEE PLUMBING DRAWINGS FOR FIRE SPRINKLER INFORMATION.
 - ALIGN SOFFITS WITH FACE OF FINISHED WALLS UNLESS OTHERWISE NOTED.

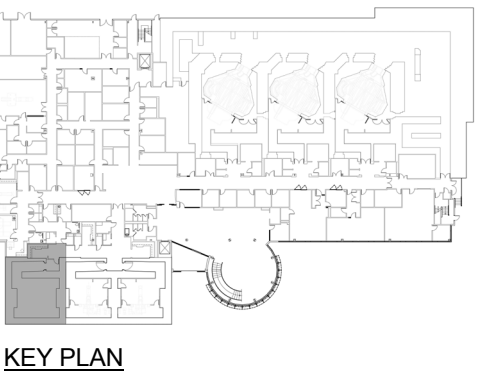
EQUIPMENT SCHEDULE (H)

Type	Mark	Type Comments
1.0	VERO	
2.0	Pulse Modulator Panel	
2.1	System Control Panel	Equipped w/ Support Frame
2.2	Imager Control Panel	Equipped w/ Support Frame
2.3	Image Power Supply Panel	Equipped w/ Support Frame
2.3	Image Power Supply Panel	Equipped w/ Support Frame
2.4	Exatrac Computer Cabinet	Equipped w/ Support Frame
2.5	Couch Control Panel	
2.6	Image Starter Panel	
2.6	Image Starter Panel	
2.7	Operator Console Panel	
3.0	Heat Exchanger Unit	Equipped w/ Support Frame
3.1	SF6 Gas Supply Liquid Cooling Cabinet	Equipped w/ Support Frame
3.2		Equipped w/ Support Frame
4.0	Vero Transformer Panel	
5.0	Pre-Action Sprinkler Cabinet	See Mechanical
5.1	Transformer Box - XPLR3	See Mechanical

EQUIPMENT SCHEDULE (H)

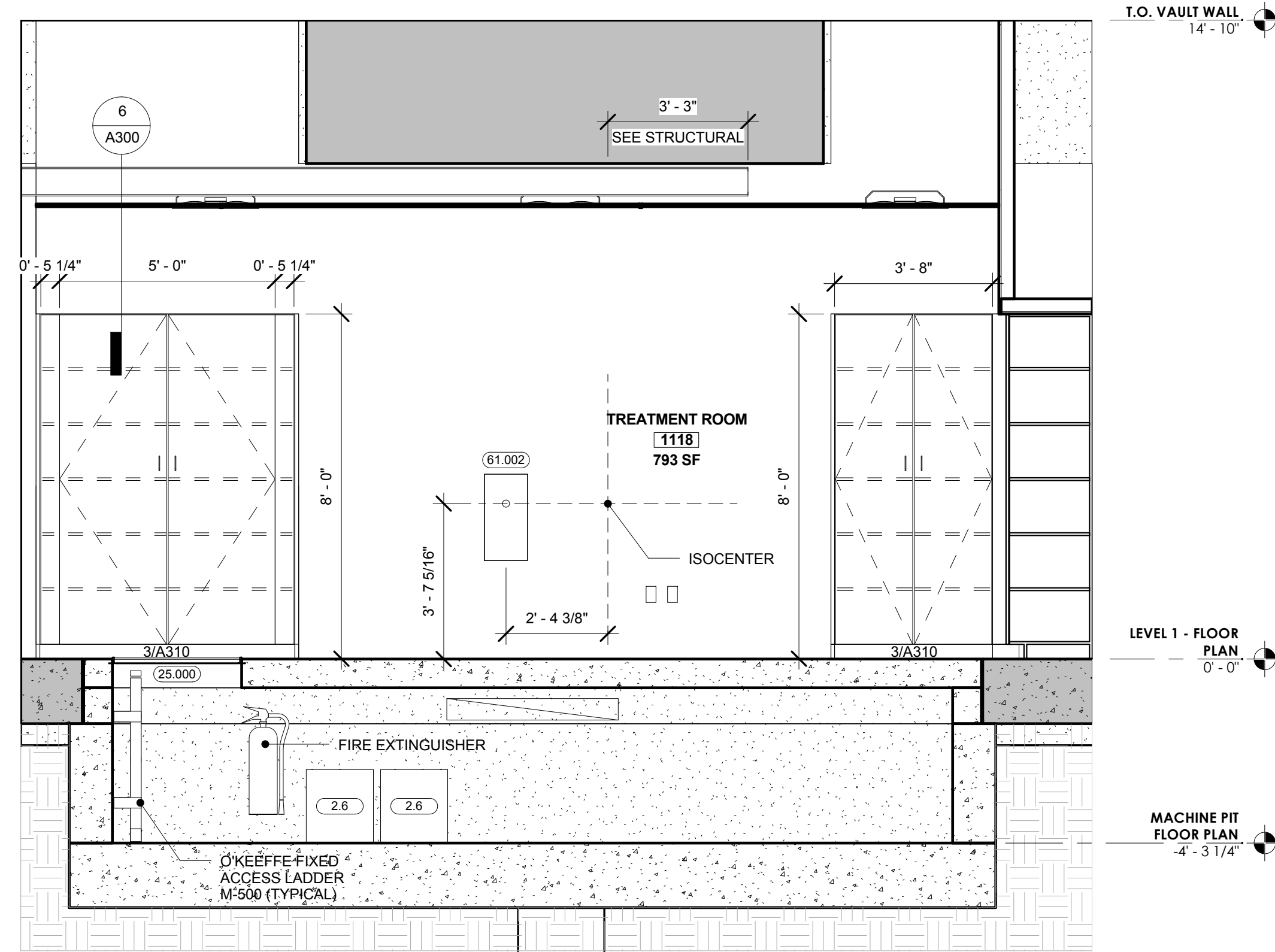
Type	Mark	Type Comments
5.2	Transformer - PLR3	See Mechanical
5.3	XFMR Disconnect	
25.000	Bilco Floor Access Hatch (3'-0" x 3'-0")	Type T-4
25.000	Bilco Floor Access Hatch (3'-0" x 3'-0")	Type T-4
25.011	Floor Box (4" Dia.)	
25.011	Floor Box (4" Dia.)	
26.001	LCD Extractor Arm Ceiling Mounted Monitor Arm	Max. 13' 9" Install Height
26.002	IR Camera	
61.001	Ceiling Rail Laser Panel	Ceiling Mounted
61.002	Cross Laser Panel	
61.002	Cross Laser Panel	
61.002	Cross Laser Panel	
63.000	Eye Beam Sensor	
63.000	Eye Beam Sensor	
67.000	CCTV Camera	Ceiling Mounted
67.000	CCTV Camera	Ceiling Mounted
118A.01	(1) 4'-0" x 8'-0" Fiberglass Door and HM Frame	See 1/A3.00 & 2/A3.00



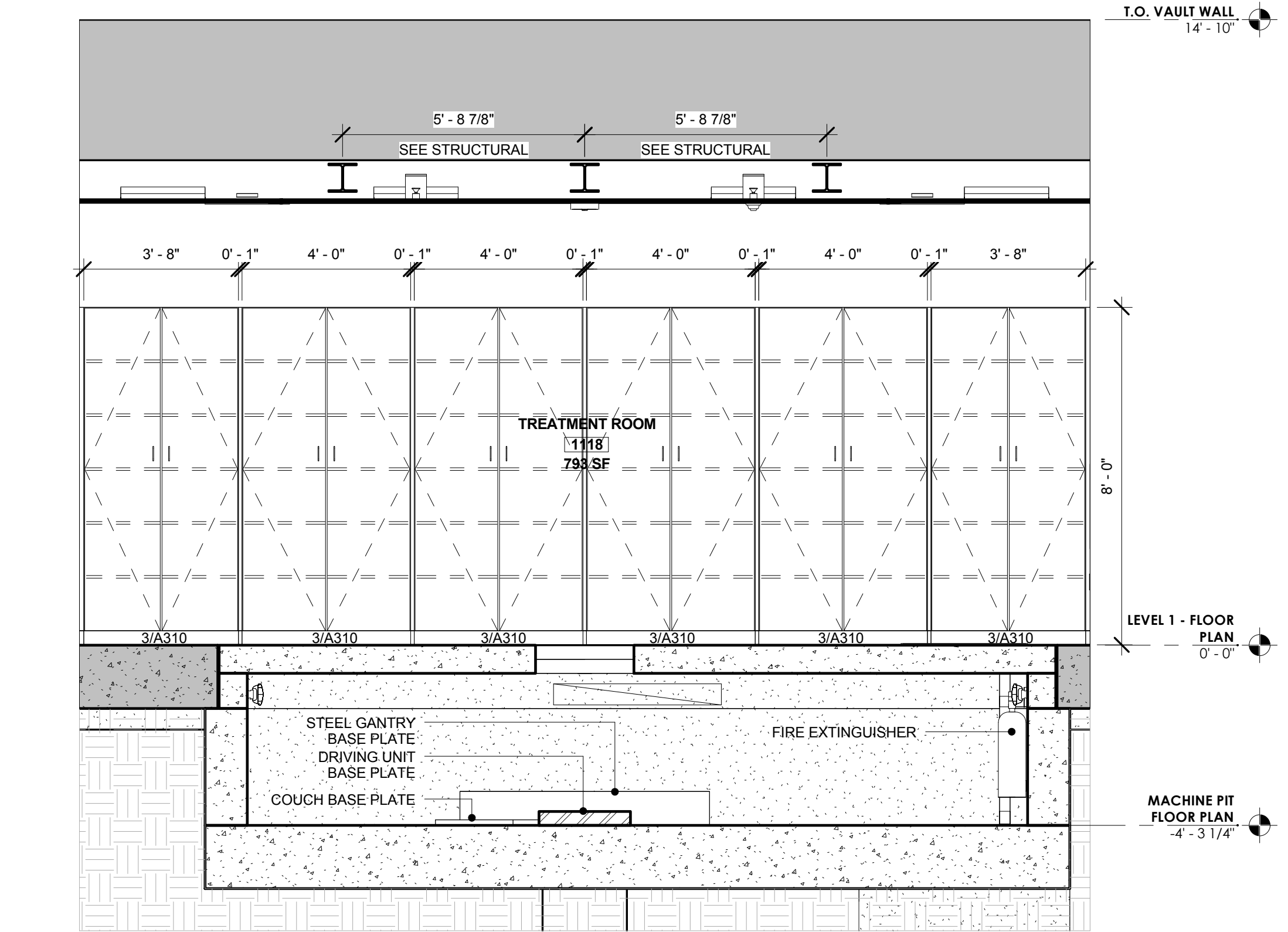


Revisions

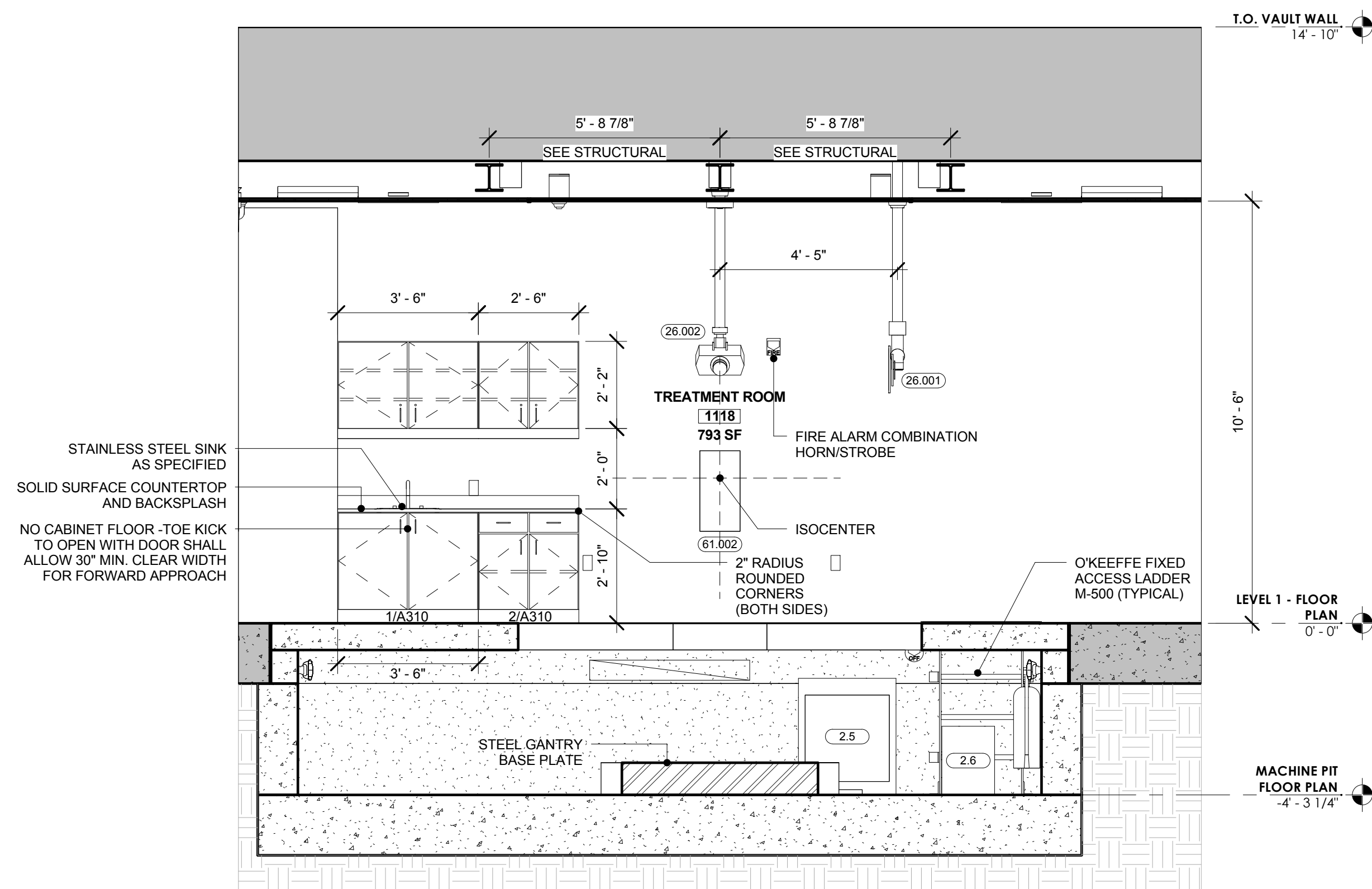
EQUIPMENT SCHEDULE (V)		
Type	Mark	Type Comments
1.0	VERO	
2.0	Pulse Modulator Panel	
2.1	System Control Panel	Equipped w/ Support Frame
2.2	Imager Control Panel	Equipped w/ Support Frame
2.3	Image Power Supply Panel	Equipped w/ Support Frame
2.3	Image Power Supply Panel	Equipped w/ Support Frame
2.4	Exatrac Computer Cabinet	Equipped w/ Support Frame
2.5	Couch Control Panel	
2.6	Image Starter Panel	
2.6	Image Starter Panel	
2.7	Operator Console Panel	
3.0	Heat Exchanger Unit	Equipped w/ Support Frame
3.1	SF6 Gas Supply Liquid Cooling Cabinet	Equipped w/ Support Frame
3.2		Equipped w/ Support Frame
4.0	Vero Transformer Panel	
5.0	Pre-Action Sprinkler Cabinet	See Mechanical
5.1	Transformer Box - XPLR3	See Mechanical
5.2	Transformer - PLR3	See Mechanical
5.3	XFMR Disconnect	
25.000	Bilco Floor Access Hatch (3'-0" x 3'-0")	Type T-4
25.000	Bilco Floor Access Hatch (3'-0" x 3'-0")	Type T-4
25.011	Floor Box (4" Dia.)	
25.011	Floor Box (4" Dia.)	
25.011	Floor Box (4" Dia.)	
26.001	LCD Extractor Arm Ceiling Mounted Monitor Arm	Max. 13' 9" Install Height
26.002	IR Camera	
61.001	Ceiling Rail Laser Panel	Ceiling Mounted
61.002	Cross Laser Panel	
61.002	Cross Laser Panel	
61.002	Cross Laser Panel	
63.000	Eye Beam Sensor	
63.000	Eye Beam Sensor	
67.000	CCTV Camera	Ceiling Mounted
67.000	CCTV Camera	Ceiling Mounted
118A.01	(1) 4'-0" x 8'-0" Fiberglass Door and HM Frame	See 1/A3.00 & 2/A3.00



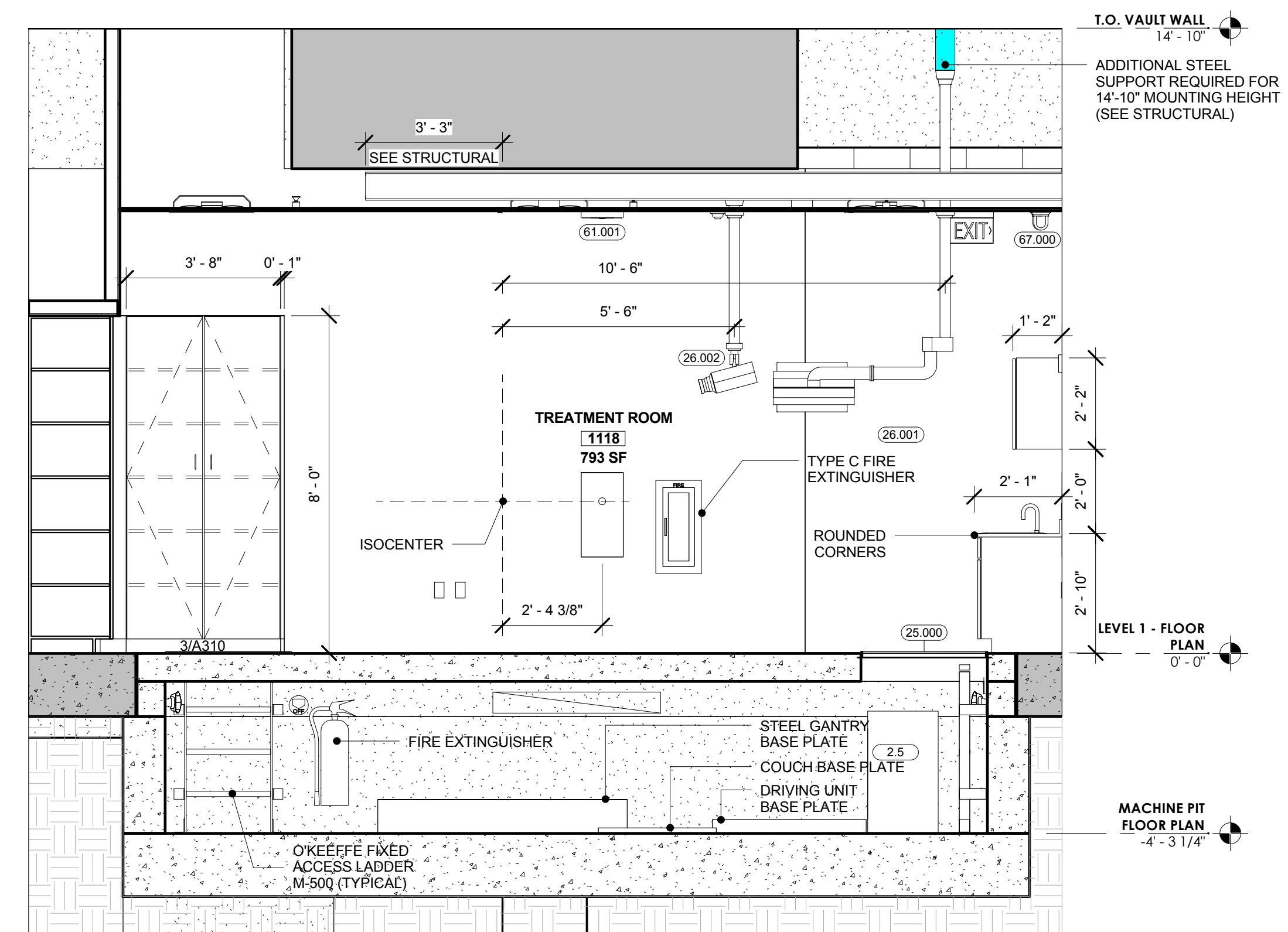
1 VERO ROOM - EAST ELEVATION
 3/8" = 1'-0"



2 VERO ROOM - SOUTH ELEVATION
 3/8" = 1'-0"



3 VERO ROOM - NORTH ELEVATION
 3/8" = 1'-0"



4 VERO ROOM - WEST ELEVATION
 3/8" = 1'-0"

